

Discovery

Resilience

Resilience is the theme for 2022 - a departure from the plans we had in place since 2019. When we had initially picked out a theme for 2022, the pandemic had not yet started and we had no clue how much the world was about to change. We have gone through so much in the last 20 months and have discovered how resilient we are despite the trying times.

As we end our 120th year we wanted to give a special thanks to our members who helped us sustain and thrive during such extraordinary times. The COVID-19 pandemic has taken a lot from us in many ways - most of us have never lived through such a challenging time for the world.

Ferry Beach, however, has seen some of the world's scariest events including a previous global pandemic in 1918. Ferry Beach made it through that one and we aim to make it through this one with your support!

Your gifts have been so appreciated. Gifts have doubled since 2019, from around \$80,000 to \$160,000, with an increase in sustaining donors as well as one-time gifts. We lost about \$1.6 million in revenue over the last 20 months and have been fortunate to retain our year-round staff with help from donors and the federal government.

We are grateful that before the pandemic we were able to catch up on some of our critical facility's needs. Having more infrastructure in place was helpful when we needed funds to support our operations. We are not out of the woods yet, but we are hopeful that with a more robust spring, we will be able to start the summer with the resources we need. A gift now would help make that reality possible. Visit www.ferrybeach.org/giving to explore the many ways you can help support Ferry Beach right now.

Hopefully when the pandemic is under control and we can resume a more normal life we will be able to look back with pride in seeing what we were able to accomplish together and appreciate our collective resilience as a community.

IN THIS DISCOVERY

- ① Resilience
- ② Taking Deposits; Membership Renewal
- ③ Facilities Update
- ④ BOARDwalk
- ⑤ Year End Giving

AND MORE!



Now Taking Deposits for Next Summer

Have you made your reservations for next summer yet? Our registration team is accepting deposits for next summer. Don't lose your favorite room or wait until it's too late. Make your plans now and secure your room! Call registration at 207-282-4489

June 10-19 Profound Treasury Buddhist Retreat

June 20-25 Work Week

June 26-July 2 Youth Camps (Week 1)

July 3-July 9 Youth Camps (Week 2)

July 9-15 RE Week

July 16-22 ChoralFest

July 16-23 GAYLA

July 23-30 The Well

July 30-Aug 6 Family & Friends

Aug 6-12 Circles of Life

Aug 12-14 Maine AFG Al-Anon Convention

Aug 14-20 In the Company of Women

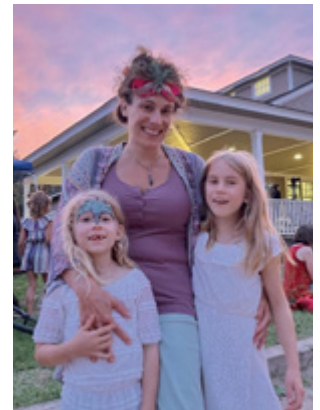
Aug 14-20 Circle of Music

Aug 21-26 Sacred Circle Dance Camp at Ferry Beach

Aug 27-Sep 2 Quilting by the Bay

Aug 28-31 The Beach Getaway

Sep 2-5 Labor Day Weekend



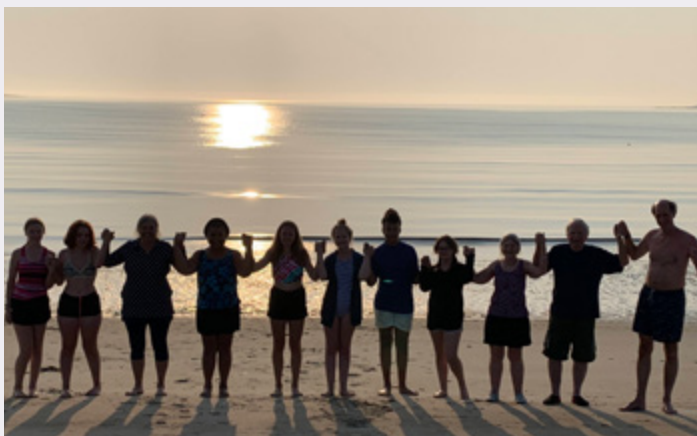
Time to Renew Your Membership

Are you a member of Ferry Beach? It's that time of year again. Time to renew your membership for 2022. Maintaining annual memberships is an important part of being part of the Ferry Beach community. Membership dues help fund facility related projects and go towards improving our campus. In the past year we have used funds generated from memberships to tackle some pretty large projects:

- New wi-fi system to launch this spring
- Built a new path to the Chapel
- Improved lighting in several areas across campus
- Purchased EZ-Ups to help keep people outdoors to eat during COVID
- Replaced takeout window and flooring in the store
- Removed dangerous dead trees from the grove

Membership fees are set to rise to \$35 for individuals and \$60 for families in 2022. Purchase your membership before 1/1/22 at the current rate, or buy a multi year membership and save.

Renew at www.ferrybeach.org/membership





Facilities Updates

Maintenance Coordinator David Daigle has been hard at work since he came to Ferry Beach in the spring of this year. If you visited campus this year you surely must have seen him around campus fixing, building and improving. Some of the highlights from this year include:

- Rebuilding the bridge to the C section in the Grove and fixing the road to the chapel
- Repairing damaged screens across campus
- Improving safety by moving all flammable materials out of the workshop and into fire-safe storage
- Sealed up the Rose Pavilion to prevent rodents
- Installed kick plates on all dorm room doors
- Sealed and insulated the drafty doors in DeWolfe
- Cleaned out Underwood basement
- Electrical & plumbing work to prepare for the underneath of Rowland to be insulated
- Re did the bathroom in between Ziegler and Murray room
- Repaired stairs into Kelley Cottage

...and so much more. We are so grateful to have Dave on our team and look forward to the many improvements he in store for us!



BOARDwalk by Doug Edwards, Board Member

I don't know about you but as exciting as this year has been for me personally, at this point of the year I am feeling like I need to retreat to my hibernation place. My emotional armor has taken a beating. Like a lot of people, I thought we were going into the "roaring twenties" and out of the pandemic this year. Instead, it looks like our daily processes have had to evolve to keep us ahead of the virus. And the virus, on top of the continual reawakening to climate changes, justice issues, and the national political divide makes it hard for me to act as if everything is okay.

For that reason alone, I am thankful for Ferry Beach Retreat and Conference Center. I am definitely leaning on the "retreat" part. The word retreat can mean:

- a peaceful, quiet place
- a period of retirement, seclusion, or solitude
- a military withdrawal
- an act of reversing direction and receding from a forward position
- the act of pulling back from something dangerous or unpleasant

For me, it's a combination of all of these. Being at Ferry Beach allows me to get to a place of spiritual safety and restoration so that I can gather myself and get ready to face the world again.

This year, the theme for our program year was Imagine. It really could have been "Re-Imagine" as many of the established camp routines and programs had to evolve to keep staff and visitors safe. The good news was that many of our returning groups were up to the challenge of reclaiming their experience at the conference center. I believe that they needed to retreat to this sacred place and take the opportunity to see friends, take time to learn or to self-reflect, and to bathe in the traditions of the programs at the retreat center.

Now, we enter a slower period as we retreat into Winter. There are still things going on at Ferry Beach! There will be at least two community dinners (see the schedule on the website or this very issue). We will be participating with Age Friendly Saco and the Saco Biddeford Rotary to deliver hot meals to 300 community members in December and February. Takeout meals have resumed. The board will have their annual retreat in January to discuss and strategize.

The theme for 2022 will be Resilience. We are certainly learning this, yes? The need to retreat, take an accounting of one's self and gather the strength to go back out into the World demands a certain kind of resilience. And we will have to be resilient to live into the hopes and dreams that we have imagined over the last year. Take a look at the complete schedule of events on the website to see where you might plug in to recharge. You can also consider taking a personal retreat and reserve a cabin during the year.

I hope that you and your circles enjoy this winter. Take time to retreat and find that quiet place of solitude. Be safe and take care!

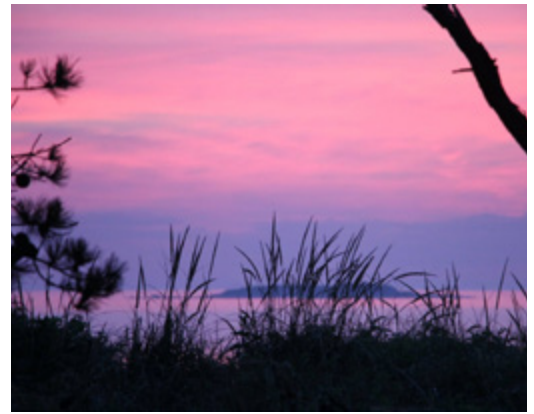
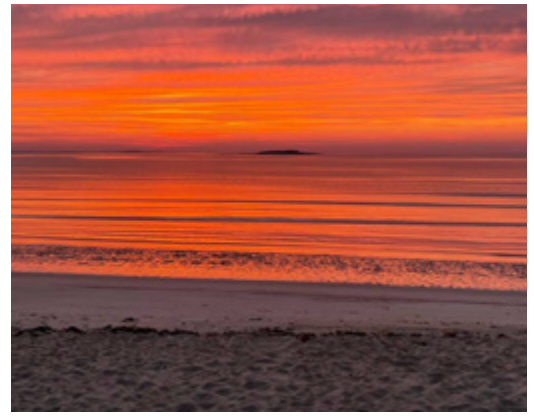


Year End Giving

As 2021 comes to a close we wanted to thank each person who donated to Ferry Beach with their time, talent and treasure. The pandemic has created so many challenges for our small organization but our members stepped up in ways we haven't seen before. Our monthly income from sustaining donors doubled, one-time gifts were at an all time high, and so many members and conferees donated their time to help us during the busy summer season when we didn't have enough staff to effectively operate.

Generosity has been at an all time high, and we couldn't be more grateful for the support! Between the increased giving and a busy season, we are encouraged that we have the financial capacity to make it to next spring. But, with the concerns around new Omicron COVID variant we still need your support!

As the year comes to a close, we are asking our members and supporters to consider a gift to Ferry Beach to help us continue bringing mission based programming to our communities for years to come. Any gift you are able to give, whether it is a sustaining donation that provides us stable revenue year long, or a one-time gift that helps us overcome this crisis, every donation helps! Become a sustaining donor or give a one time gift at www.ferrybeach.org/giving



Thoughts of Ferry Beach

Thank you for being here and for continuing to lead us through the pandemic. It was such a challenging time and many organizations were unable to continue. We knew you all would get us through. - Ferry Beach Member

I love Ferry Beach and will continue attending for the rest of my life. - A Conferee

I love this place, it is so nice to be able to come here and sit around the fire with friends. - Community Member

Engaging with other people was thoroughly enjoyable. This was a great offering. Thank you. - Online Class Attendee

Thanks for letting us use your space this last year. We had no place to go because many community buildings shut down. We are so appreciative that you took us in! - A Girl Scout Leader

When I first came to Ferry Beach I was a young shy professional filled with self-doubt and shame. I took a few writing workshops that freed me to write and publish and launch a career that eventually involved national and international presentations and the Presidency of an international trauma organization. It would not have happened without the validation and encouragement I received from the Beach. Truly life changing... - A Conferee

You helped us through the lock down, I appreciate this experiment of yours and I hope we helped Ferry Beach through a difficult year. You helped us! - A Take-Out Customer

This is a most amazing place. I want to do anything I can to help it along. It is just such a community jewel. - A Neighbor

Loved being able to visit with people here during the lock down. You kept us going. - A Community Member

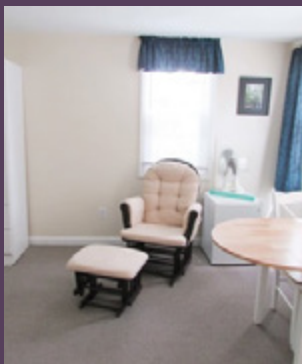
Discovery

DECEMBER 2021

Book a Personal Retreat at Ferry Beach this Winter!

Plenty of warm lodging available!

Call Registration at **207-282-4489 x1** for rates and availability!



SUMMER AT FERRY BEACH

enriching & engaging retreats on the sandy southern maine coast

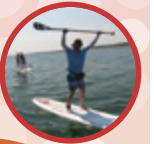
ADULT RETREATS

Explore a craft, learn a skill, meditate, play, hike, relax on the beach, share conversations with other adults, write, take photographs, join a support group, quilt and much more. Make new friends or come with a group. Adult weeks are packed with fun, friends and a variety of content. Come with a friend, a partner, or escape by yourself. You will always feel welcome at Ferry Beach.



PADDLE POWER

ADULT



YOGA

ADULT

FAMILY CAMPS

Ferry Beach is the perfect venue for the parents/caregivers who want to be with their whole family for vacation but don't want to cook, clean or be the social director all week! With the beach in one direction, the dining hall in the other, and age appropriate activities for every family member, all the ingredients for a fabulous time are here. Ferry Beach offers the best in family getaways. We are an open and affirming community and welcome all families!!



GAYLA

ADULT



CHORAL FEST

ADULT



CIRCLE OF MUSIC

ADULT

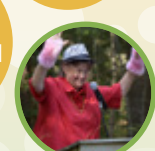
IN REAL LIFE

FAMILY



COMPANY OF WOMEN

ADULT



THE WELL

FAMILY



FAMILY & FRIENDS

FAMILY



THE WELL

FAMILY



CIRCLES OF LIFE

FAMILY



RE WEEK

FAMILY



DIFFERENT DRUMMERS

YOUTH ENTERING GRADES 7-9

YOUTH CAMPS

In the summer, Ferry Beach is a place where kids discover, explore, and take action. The southern coast of Maine is alive with life's transformations and a wonderful place to grow and change. Children entering 4th through 12th grades share the campus in three age appropriate camps organized by volunteer leaders, many of whom are parents, teachers, religious educators, and other kid-friendly supporters. All of our staff must pass a robust background check!
LGBTQ+ affirming.

FUTURES

YOUTH ENTERING GRADES 10-12



KFTE

YOUTH ENTERING GRADES 4-6



HAVE YOU BOOKED YET?

ferrybeach.org/schedule