

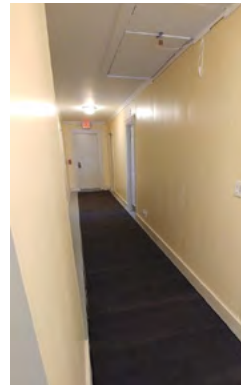
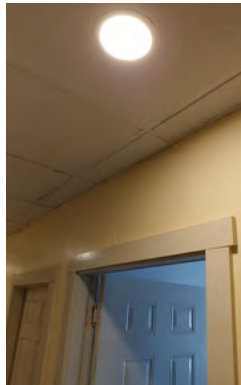
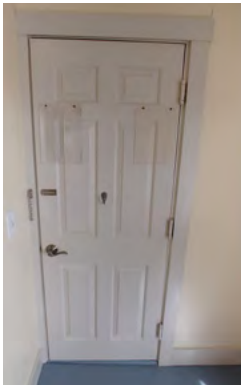
# Discovery

## Freshening Up Underwood

Over the past month, members of the Ferry Beach Team have been working to spruce up the Underwood Dormitory. Every piece of furniture was removed and shelving was installed in each room. The make-over crew then painted every single bed, wall, piece of trim and every inch of floor inside the building. We've also placed runner carpets along in the hallways to protect the floor from scratches and scrapes. The renovation is not yet 100% complete, but in the end, Underwood will have new light fixtures, door knobs, locks, and thanks to a generous donation, Wi-Fi. When making your summer reservations, you should consider staying in the freshly upgraded Underwood Dorm!

Don't forget about our upcoming Dorm Rehab Project in 2019. We are forming dorm teams this summer and will begin upgrading the buildings in 2019! If you sign up for Underwood you have a head start!

[www.ferrybeach.org/campus](http://www.ferrybeach.org/campus)



## In This Issue

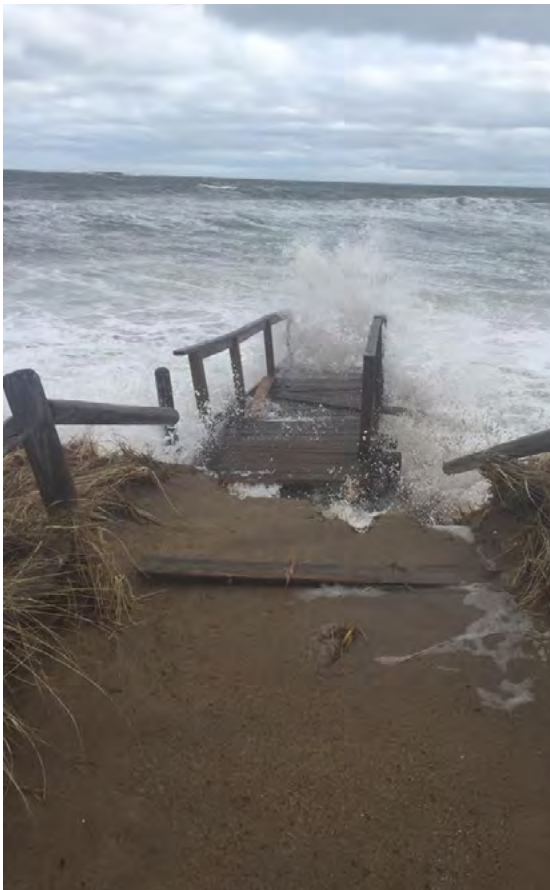
Underwood Repairs  
Page 1

Dune & Boardwalk  
Damage  
Page 2-3

2018 Schedule  
& Special Events  
Page 3

2018 Family  
Conferences  
Page 4-5

Work Week Projects  
Page 6



## Severe Dune and Boardwalk Damage

Those who follow us on Facebook know that we lost our boardwalk during a powerful nor'easter on March 3<sup>rd</sup>, 2018. A member of our staff, happened to be here at the time and caught the destruction on video. The dramatic clip shows the stairs being tossed around by the angry ocean and busting apart.

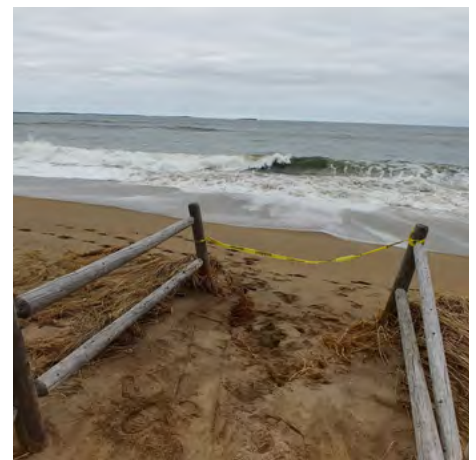
Of course, we lost more than the stairs. The upper decking took a couple of hits and much of it was picked up and removed during the highest tides we have seen here in a very long time. Our dunes also took a huge beating, and we lost most of them in the storm. If you haven't seen the pictures, they remain on our Facebook page and we have posted some here on our website: [www.ferrybeach.org/boardwalk](http://www.ferrybeach.org/boardwalk)

We have tenderly cared for the dunes on our beach front for the last ten years, replenishing dune grass every year for the last five. But the grasses can only do so much. Our next steps are going to require something more.

Last year, we committed to building an ADA board walk at the end of Morris Avenue, farther away from the encroaching erosion. The grade of the dune system here is less severe and we will be able to create the appropriate slope for a wheel chair to have access. The plan was to raise money for the project this summer, and perform the work in the fall. Now, with the boardwalk destroyed, we have to move this project up and build as soon as we get permitting.

We will need \$12,000 to replace the boardwalk and to plant new dune grass where the old boardwalk was and in the area in front of Rowland. Our plan is to build a boardwalk that sits above the dune, allowing the grasses to experience the rain and sun below thus allowing the grass to grow underneath. The slats in the boardwalk will be spaced to allow for sand and water to escape the top.

... Continued on Page 3



...“Severe Dune and Boardwalk Damage” Continued from Page 2

The new boardwalk will not include stairs and we are hoping to get extensions that will allow us to roll out a thick mat, giving access much farther into the beach during low tide. Of course, the mat will have to be picked up as the tide comes in.

In addition to building the new boardwalk, we will rebuild the dune and replant grass in the area of the old boardwalk. During this storm, water spilled out onto the street in front of Quillen from the opening that the current boardwalk provided. As this area becomes unstable, we believe it is important to create and reinforce the dune to protect our campus. Our iconic pictures of the sunrise over the boardwalk there will become much more precious!

We hope you will consider helping us replace the boardwalk, build up the dunes and plant new grasses. Please send a gift to the ADA Boardwalk, c/o Ferry Beach, 5 Morris Ave, Saco, ME 04072. You may also visit <https://goo.gl/qHEew7> to make your donation online.

Dune rebuilding and boardwalk construction will begin on select weekends this spring. We will keep you informed, as there will be opportunities for volunteering and fund raising. Thank you so much for all of your continued help and support!

**2018 Summer Schedule & Special Events**

[ferrybeach.org/summer](http://ferrybeach.org/summer)

- June 9-15: Work Week
- June 9-12 / June 12-15: Work, Play & Grow
- June 15-24: Profound Treasury
- June 24-30: Youth Week 1  
KFTE • DD • FUUTURES
- June 30 - July 7: Youth Week 2  
KFTE • DD • FUUTURES
- July 7-13: RE Week
- July 14-20: Choral Fest
- July 14-21: GAYLA
- July 15: DAYLA (GAYLA for a day)  
Featuring the Kinsey Sicks
- July 21-28: Kayaking & Paddle Boarding
- July 28: Fog Dog Power  
Paddle Race & Cruise
- July 21-28: Yoga
- July 22-27: Slow Fashion
- Jul28-Aug 4: Family & Friends
- Aug 4-5: Music & Mindfulness \*

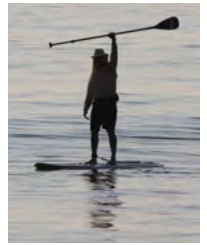
- Aug 4-11: UUFAP
  - Aug 5-10: Motivational Interviewing
  - AUG 11: Concert Featuring  
Kelley Hunt & Rodney Mashia
  - Aug 11-17: Circle of Music
  - Aug 11-17: Company of Women
  - Aug 12-16: Women’s Healing
  - Aug 20-24: Soul Path Renewal
  - Aug 19-23: Sacred Circle Dance  
at Ferry Beach
  - Aug 24-26: AI Anon
  - Aug 26-28: The Beach Getaway
  - Aug 26-29: Only Love
  - Aug 26 - Sep 1: Quilting By the Bay
  - Aug 28-31: Our Whole Lives  
for Young Professionals
  - Aug 31 - Sep 3: Labor Day Weekend
  - Sep 1: Labor Day Cookout with live  
music from the Downeast Soul Coalition
- \* Program Not Finalized and is Subject to Change





## Family Conferences

by: *Marty Burgess*  
*Vice President of the Ferry Beach Board*



Christine and I have been coming to Family and Friends for over 30 years. Raising our children in such a welcoming and supportive environment has been a pleasure. The love in action we find in Family and Friends sustains us for the rest of the year. We've enjoyed watching all of our families grow during the past 30 years. We are extraordinarily fortunate to be watching future generations of 30 years ago become the current generation supporting and enjoying our community of Family and Friends at Ferry Beach.



Seven years ago, I was asked to serve on the Ferry Beach Board. During the last several years, Ferry Beach has made great strides in tackling the financial and physical issues it faces. The willingness to discuss and sort out these many challenges has made us a stronger community. The list of transitions we have made is long, with joy filled pain recalling the process.



Family and Friends has been a part of this transformative work that has taken the beach from the precarious edge of the financial abyss. It was not that long ago our lifestyle was crisis management and living from deficit to deficit. Today, thanks to the demonstration of "love in action" by our Ferry Beach community, we have been consistently operating with positive cash for the past 4 years! Since 2013, we have replaced eight roofs that were in danger of collapse, established the Cross Cottage and Metz village as ADA and family friendly housing

units, upgraded electrical systems in the grove, and much more! There is new energy in the staff with diverse skills which benefits us all! We are not done yet, we continue to remain just a few moments from our next crisis. Dune recovery, Grove bathhouses, Quillen annex, Gardiner and Claflin all need attention. Today we are planning for what is next and to define the next era of Ferry Beach.

As part of our moving forward, we continue to promote and expand Family weeks at Ferry Beach. These weeks are fantastic and fun, but a lot of energy is needed to go into them. The amount of coordination and resources used for conferences goes unnoticed when it all works, and the week is successful. Staff has been active in managing events and has helped us be realistic in our resource usage helping to maintain the positive cash flow for Ferry Beach.

As some of us have aged, our comfort needs have been redefined: things like private bathrooms and cooking for extend family and friends is of interest. Over the last few years, some of us have found housing off campus for those needs (for an onsite alternative check out Cross Cottage, Metz Cabins or 5 Morris, and now the Kelly Cottage). Some of us may be less interested in the workshops and find ourselves just coming around to sit on the beach during the day, meet friends at social hour then join in for the activities throughout the afternoon and evening.

... Continued on Page 5



...“Family Conferences” Continued from Page 4

While those of us who are attending the conference are always excited to see old friends, the coordinators of our conference have noticed that when a handful of people stay off campus and don't participate, the energy of the overall conference goes down. Interpret this as “We miss you!” With fewer people attending the conference, it is harder to provide compensation to workshop leaders and coordinators.



Some of us are no longer paying a conference fee or taking meals at Ferry Beach. When staying on campus taking the ‘vacationer’ identifier and when off campus being a visitor, the number of bodies often stays the same, but the income is reduced. This limits the beach's resources and puts a strain on coordinators in providing the robust schedule we all enjoy.



Ferry Beach provides \$15,000 on in-kind compensation to 25 people on average for family weeks: coordinators, ministers, musicians and workshop leaders. In the past few years, we have asked workshop leaders to contribute to their food costs to help defray what used to be more than \$25,000 in comps for family weeks. In addition, Ferry Beach spends about \$40,000 a week in labor, utilities, maintenance, food, insurance and all of those extra things that keep a conference center on the beach working. Adding the volunteer compensation, the average cost for family weeks is the highest of other types of weeks at around \$60,000.



Last year, our Family and Friends conference coordinators decided to encourage Ferry Beach to ask for a “use fee” for those who come to the family weeks but don't pay the conference fee. What that all means to us: This year, in support of our conference coordinators, Ferry Beach instituted a use fee for those not registered for the workshops at the three family conferences: RE Week, Family & Friends, and UUFAF. This fee is \$25 per day for those staying off campus and \$19 per day for those staying on campus. This fee will help defray the cost of volunteer compensation as well as overall costs to run Ferry Beach during our conference season.



Participating in the conference brings your energy back to Ferry Beach. While we love to see you here, consider the importance of your participation in the conference workshops and activities.

## Big Ways to Give

Ferry Beach relies on you! We have been here providing family fun and inspiration since 1901. We have grown from a single “hotel” on the beach to a community of buildings, a chapel in the woods, a beautiful campground and so much more. As your spiritual home, Ferry Beach is a place we know that you want to preserve and protect for the next 100 years and beyond! We rely on our memberships and your gifts to help maintain and grow Ferry Beach. Please consider the following great ways that you could support Ferry Beach for a sustainable future!



1. **Ferry Beach Giving Tree** [www.ferrybeach.org/givingtree](http://www.ferrybeach.org/givingtree)
2. **Become a Sustaining Donor** [www.ferrybeach.org/sustaining](http://www.ferrybeach.org/sustaining)
3. **Consider Leaving a Legacy** [www.ferrybeach.org/legacy](http://www.ferrybeach.org/legacy)

Love comes in many sizes and forms. Whether you are willing to make a one-time donation, become a treasured sustainer, or leave a legacy - the love you show us today will be felt throughout the entire Ferry Beach community for years to come! We greatly appreciate which ever way you choose to donate!  
[www.ferrybeach.org/biglove](http://www.ferrybeach.org/biglove)

## Work Week Projects

We’ve started a list of projects for the annual Work & Play week. We hope you will join us for the kick-off conference of the season and help Ferry Beach re-open for another year.

Visit [www.ferrybeach.org/workweek](http://www.ferrybeach.org/workweek) for an updated list of projects and activities and to register. We hope to see you in June!



- Scrape and Paint Nurses Cabin
- Replace screens of doors, and windows
- Paint Exterior of Kelley
- Pressure Wash Buildings
- Build & Stain Picnic Tables
- Kelley Cottage Interior Upgrades
- Morris Cottage furniture replacement
- Install Grove Speaker System
- Install new awning outside of Dolphin Room
- Tennis Court Repairs
- Tree removal around Rowland
- Valences for Underwood
- Clean DeWolfe Dining Hall Walls
- Clean & Organize Quillen Lobby & Dolphin room
- Gardiner 1st floor Organization
- Clean Gayla Theater
- Landscaping
- Brush removal
- Wood stacking
- Mulch spreading

Ferry Beach is a welcoming 501 (c) non-profit with a mission to awaken hearts to grow, explore and renew the spirit of universal love by working in the following areas:  
 Arts & Culture, Education, Spirituality, Care for the Earth, Personal Growth, and Social Care.